



#TraumaConf15

When There's Nobody There, Rage and Shame  
will Keep you Company – Sue Parker Hall

Resource Guide

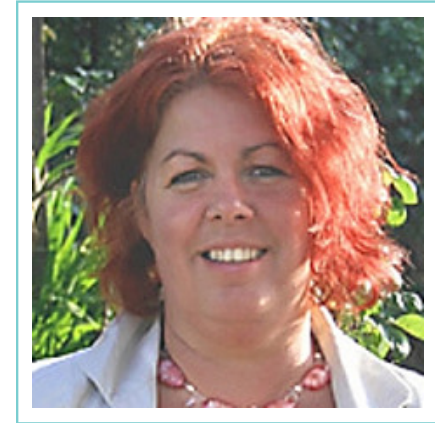
online  
events

[www.onlineevents.co.uk](http://www.onlineevents.co.uk)

# About Sue Parker Hall

[www.sueparkerhall.co.uk](http://www.sueparkerhall.co.uk)

I came to become a therapist through having a good experience of therapy myself and deciding “I want to do that!” I did my training and as I observed my trainer I decided “I want to do that!” I came to become a supervisor of practitioners in exactly the same way.



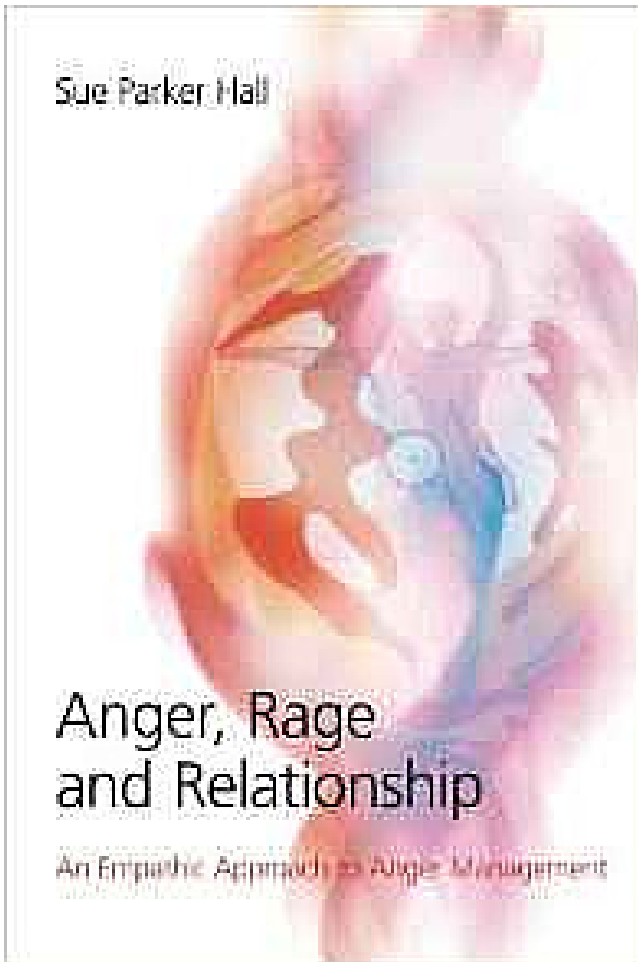
I trust the potential that a respectful and supportive human relationship has to help. I have absolute faith that everyone of us can solve our own problems.

I support clients to come to terms with what they have experienced and to become more and more able to trust and utilise their own natural problem solving ability. I observe that their lives become more and more manageable, more comfortable, lighter and more fun! Life is richer with many more possibilities and there is a feeling of more freedom.

I live in Connor Downs with my husband and two of my three daughters. I enjoy and feel supported by our beautiful environment, in particular the many sacred places in West Penwith and its cliff and beach walks.

As well as enjoying exploring the land, I gain huge pleasure from sailing with my husband around the Helford Estuary and further afield. I have crossed the Channel several times now and have often sailed to Scilly Isles.

## Anger, Rage and Relationship



Anger, Rage and Relationship presents a radically new way to understand and work with anger and rage issues. Taking a relational approach to anger and rage, the book presents a positive view of human nature, supported by recent research findings and illustrated with case studies, with individuals trusted to be essentially pro-social.

Rather than promoting strategies and techniques for eradicating anger, Sue Parker Hall, puts forward an approach which seeks to not only work with, but to differentiate between, anger and rage. Anger and rage are constructed as entirely different phenomena, originating at different developmental stages, having different functions and relational needs and requiring different aspects of relationship in the therapeutic process.

Further areas of discussion include:

- the positive aspects of anger

- practitioner protection

- the therapeutic implications of working with both anger and rage

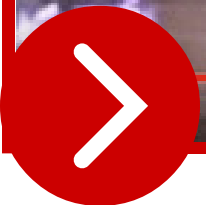
This book will provide invaluable reading for practitioners dealing with anger and rage in the therapeutic setting, as well as being of great interest to all counsellors and therapists in the related field.

[CLICK HERE FOR MORE DETAILS](#)



# Anger, Rage & Relationship

CPD  
training



0:20 / 2:49



Click the image above to watch Sue's video

# Training

## Anger, Rage & Relationship

Difficulties in acknowledging, processing and being with others' anger abound in our culture generally and can be experienced by therapists.

### (LONDON)

Friday, 6 November 2015 at 09:30 - Saturday, 7 November 2015 at 16:00 (GMT)

[CLICK HERE FOR MORE INFO AND TO REGISTER](#)

### (MANCHESTER)

Friday, 20 November 2015 at 09:30 - Saturday, 21 November 2015 at 16:30 (GMT)

[CLICK HERE FOR MORE INFO AND TO REGISTER](#)

# Training

## The Link Between Rage & Shame

Shame and rage are inseparable; we can't have one without the other. They are linked together in both subtle and obvious ways and, as this workshop will reveal, the relationship between the two phenomena is unique for each person. Shame is an issue for all of us; deepening our understanding personally and professionally makes us more effective practitioners.

### (LONDON)

Sunday, 8 November 2015 from 09:30 to 17:30 (GMT)

[CLICK HERE FOR MORE INFO AND TO REGISTER](#)

### (MANCHESTER)

Sunday, 22 November 2015 from 09:30 to 16:30 (GMT)

[CLICK HERE FOR MORE INFO AND TO REGISTER](#)

# Connect with Sue

[www.sueparkerhall.co.uk](http://www.sueparkerhall.co.uk)



**01736 850 972**

[sueparkerhall@btconnect.com](mailto:sueparkerhall@btconnect.com)

---



[@sueparkerhall](https://twitter.com/sueparkerhall)

# Connect with Onlinevents

[www.onlinevents.co.uk](http://www.onlinevents.co.uk)

 [admin@onlinevents.co.uk](mailto:admin@onlinevents.co.uk)

Click the icons below to connect with us



[@Onlinevents\\_saz](#)

[@onlinevents](#)

---

**Join our FB group**  
**CLICK HERE FOR DETAILS**



# Watch Again

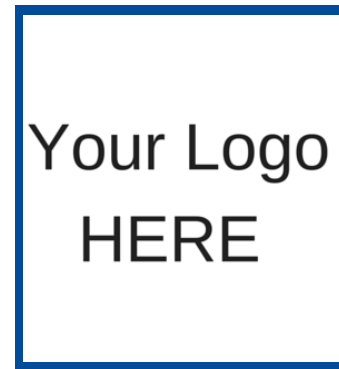
Watch this event and all our other presentations in our [Online Library](#)

<p><b>Student Membership</b></p> <p><b>Free</b> while training</p> <p>Register for events</p> <p>View events live</p> <p>View archived events</p> <p><a href="#">SIGNUP</a></p>	<p><b>30 Days Access</b></p> <p><b>£9.99</b> 1 Payment</p> <p>Register for events</p> <p>View events live</p> <p>View Archived Events</p> <p>CPD Certificates</p> <p>30 Days Access</p> <p>1 Payment Only</p> <p><a href="#">SIGNUP</a></p>	<p><b>Monthly Membership</b></p> <p><b>£5.99</b> per month</p> <p>Register for events</p> <p>View events live</p> <p>View archived events</p> <p>CPD Certificates</p> <p>First Month Free</p> <p>No Contract</p> <p>Cancel Anytime</p> <p><a href="#">SIGNUP</a></p>	<p><b>Annual Membership</b></p> <p><b>£49.99</b> per year</p> <p>Register for events</p> <p>View events live</p> <p>View archived events</p> <p>CPD Certificates</p> <p>12 months for less than the price of 10</p> <p>No Contract</p> <p>Cancel Anytime</p> <p><a href="#">SIGNUP</a></p>
---	---	--	--

[CLICK HERE TO REGISTER AND START YOUR 30 DAY FREE TRIAL](#)

# Sponsors

Click on the images for more info



Are you interested in having your logo for your website or workshop here? Contact us for more information [admin@onlineevents.co.uk](mailto:admin@onlineevents.co.uk)